

Figure 15.5. Mapped differences in the number of species predicted for the early successional subguilds between 2003 and 2027 over the study area <500 m elevation as predicted using complex models.

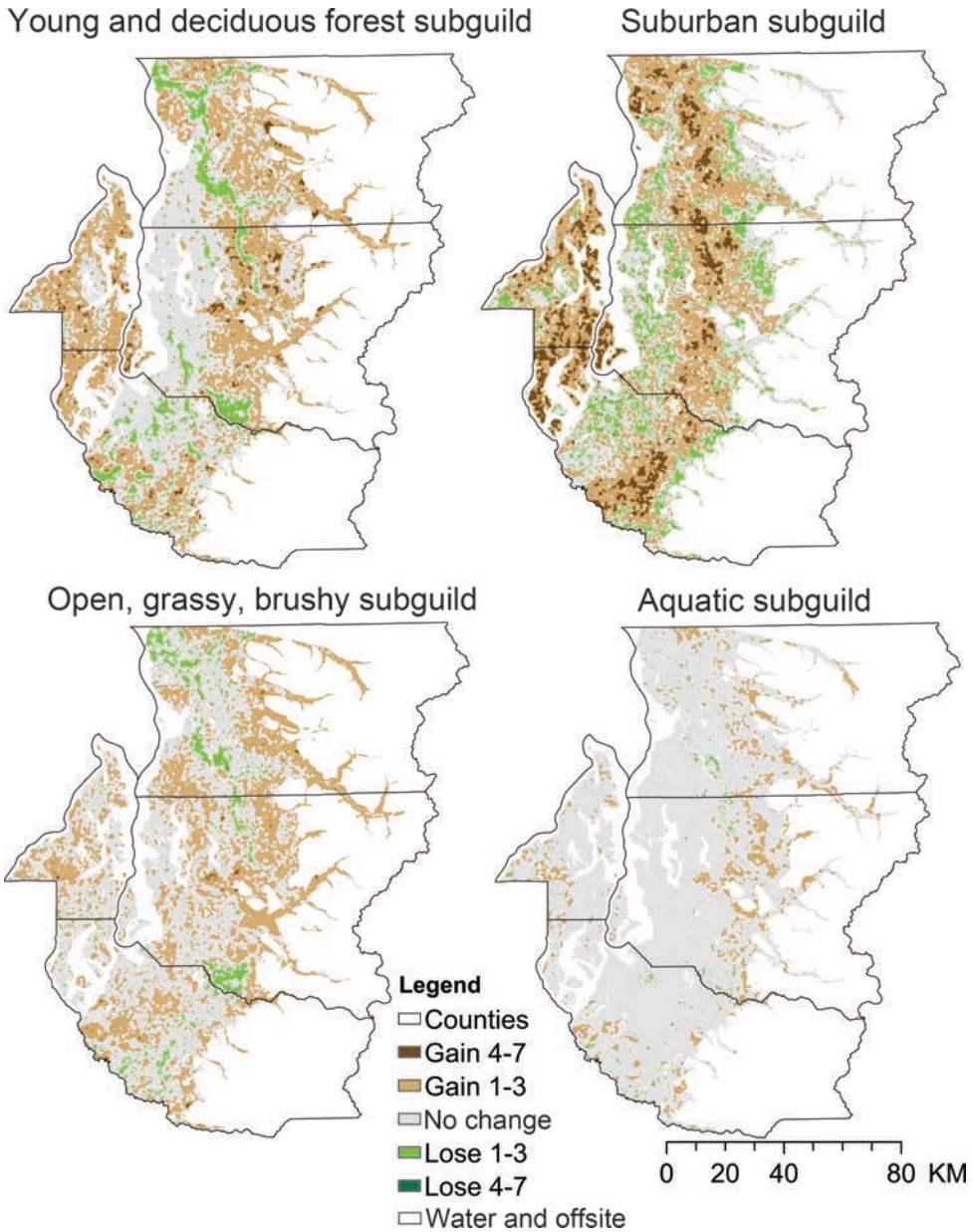


Figure 15.7. Mapped changes in total relative abundance (relative gain or loss of individuals) per hectare, summed for each species in the four early successional subguilds between 2003 and 2027 for study area predicted by the complex models.